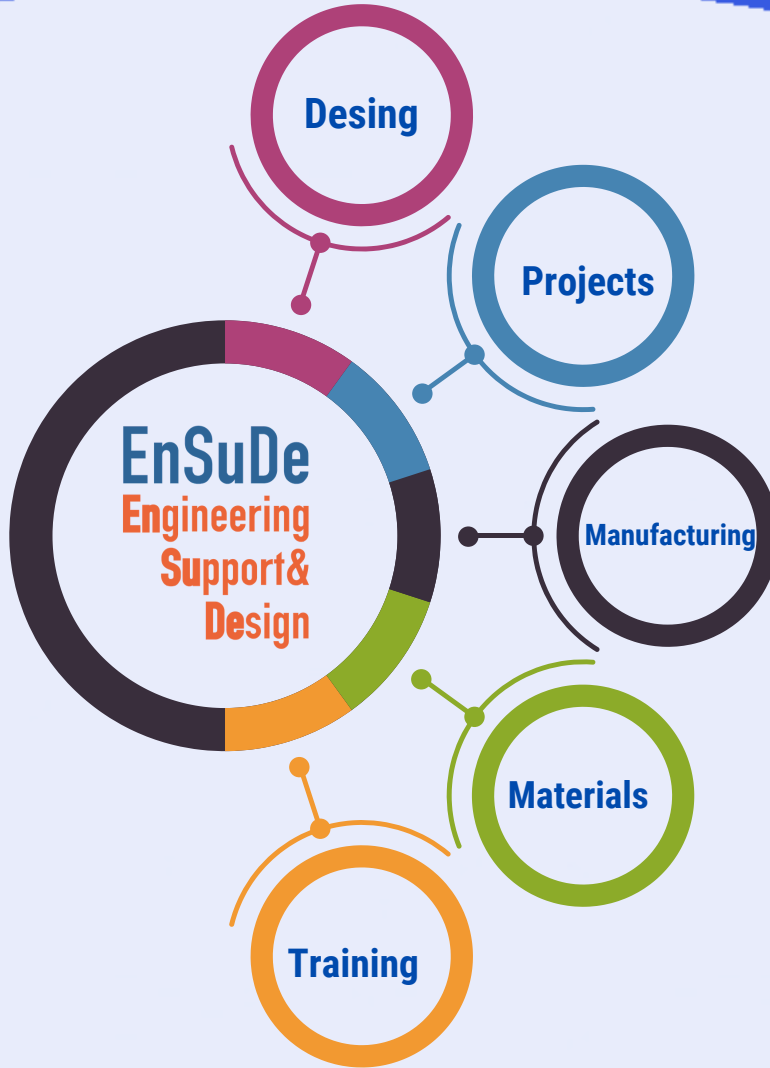


EnSuDe
Engineering
Support &
Design

PROFESSIONAL SOLUTIONS FOR YOUR TECHNICAL NEEDS



Folkart Towers, B Tower No:47/2804 Manas Boulevard,
Adalet Neighborhood Bayrakli – Izmir, Turkiye
+90 (552) 202 42 05
<https://ensude.com> | cem@ensude.com



ensudeltd



EnSuDe Ltd.

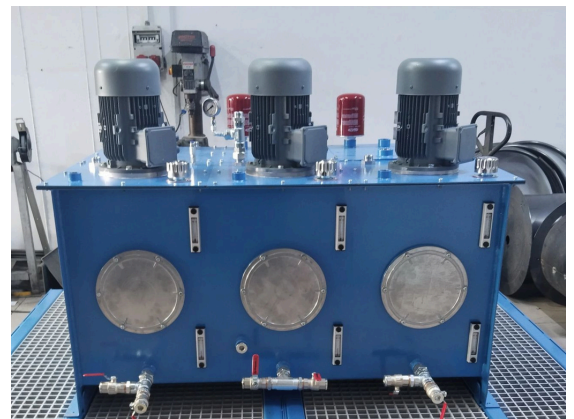
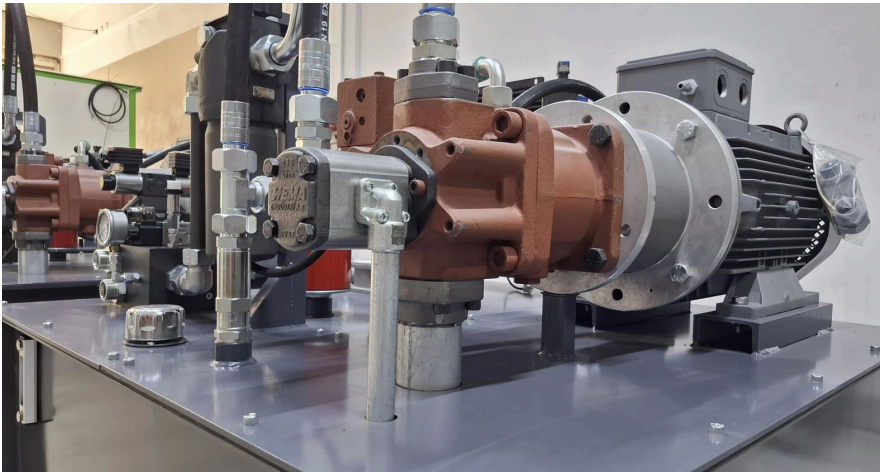


@ensudeltd

HYDRAULIC AND PNEUMATIC SYSTEMS CONSULTING

EnSuDe
Engineering
Support &
Desing

Recommend most reliable solution by controlling the Hydraulic and Penumatic Power



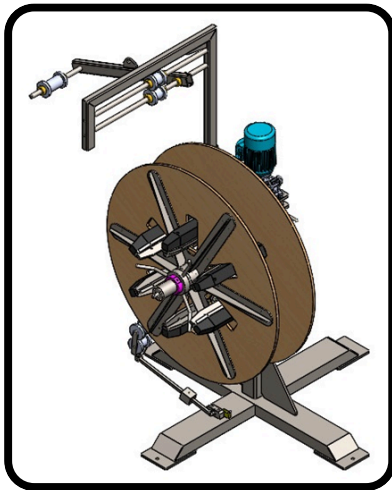
EnSuDe is specialized in hydraulic and pneumatic systems with 25 years of experience which brings innovative and result oriented solutions for mechanical manufacturing and uayomation systems of industrial facilities in several markets.

Our firm's fields of activity include a wide variety of services including systematic design, the choosing of the right components in projects and their supply, applicational consultancy, in-field support, specialized production and integrational solutions.

We approach each project with a customer-specific perspective and engineering viewpoint, completing them in accordance with the principles of reliability, efficiency, and sustainability. With our deep technical expertise, we provide not only the right product but also the right engineering support, creating permanent solutions to the challenges businesses face in the field. Our expertise in hydraulic and pneumatic technologies helps our customers increase their efficiency while optimizing their costs. In this way, our company stands out not just as a supplier, but as a reliable engineering solutions partner.

DESING, PROJECT MANAGEMENT AND CONTRACT MANUFACTURING

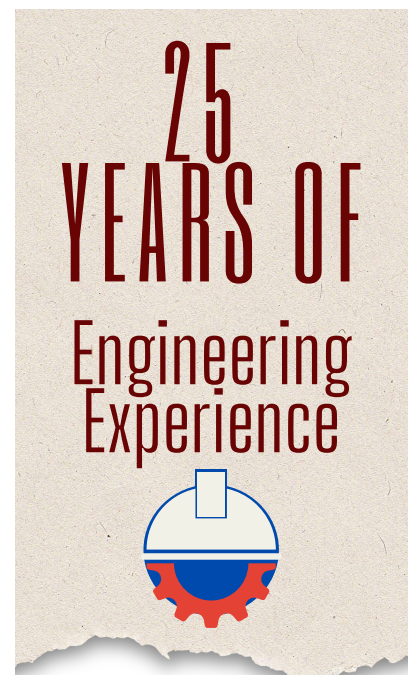
- We design machines, apparatus, and fixtures according to our customers' needs.
- While we deliver only design files to customers who request it, we complete the project on a turnkey basis for those who also want manufacturing of project.
- In addition, we provide technical support during the production process for customers who want to bring their own designs to life.



INDUSTIAL CONCLTANCY SERVICES

ENSUDE provides engineering-based consulting services for technical needs encountered in areas such as production, automation, pneumatics, hydraulics, linear systems, electric drive technologies, process tooling, machine design, and production management. Our services provide technical guidance on topics such as system selection, process improvement, product integration, cost optimization, and maintenance planning.

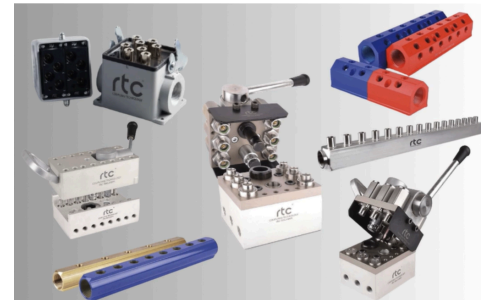
Recommendations, developed based on observations and analyses in the application field, are made taking into account the current state of the system; they are supported by training, product selection, and project development. The consulting process is not limited to proposing solutions; it also includes monitoring the implementation steps and establishing feedback mechanisms when necessary.



QUICK COUPLING SYSTEMS



Multi fluid-connection solutions for Industrial applications and Pelstic Injection Machines



Quick couplings offer safe, fast, and efficient connection solutions in systems working with different fluid types. Particularly in plastic injection molding production lines where mold changes are frequent, they minimize time and labor loss, increasing operational efficiency.

The main advantages include an easy plug-and-play mechanism, high sealing performance, durable material structure, compatibility with different fluid types, and modular system support. Our company provides supplying of different types, application consulting, and technical support for Quick Coupling products in the Izmir region.

ELECTROMECHANICAL ACTUATORS

iMotion

Responding to the changing needs of industrial automation, electric cylinders are a modern and energy-efficient alternative to pneumatic systems. Offering high precision, repeatability, and control capabilities, these systems reduce maintenance requirements and increase efficiency in production processes. With solutions tailored to engineering calculations, iMotion Electric Cylinder Systems are a reliable choice for R&D, test systems, automation lines, and specialty machines. Offering a flexible structure with integrated motor and drive Responding to the evolving needs of industrial automation, electromechanical cylinders offer a modern and energy-efficient alternative to pneumatic systems. While providing high precision, repeatability, and control capabilities, these systems reduce maintenance requirements to increase efficiency in production processes.



MEASURING SYSTEMS?



EnSuDe is the sales representative for the SUTO iTEC brand. To ensure the efficient and safe operation of compressed air systems in industrial facilities, we provide sales and technical support for measurement solutions such as:

- Flowmeters
- Air Quality Measurement Systems
- Air Leak Detection Devices

We offer the most accurate measurement solutions to improve the performance of your industrial infrastructure, reduce energy losses, and support sustainability.



Dew Point Measurement



New Generation Ultrasonic Leakage Detectors



Oil vapor and Particle Sensor for Air Quality



Eco Blower (For Bottle Drying)



Compact Flowmeters with Data Logging (1/4" ... 1")



Immersion Type Flowmeters (1" ... 12")



Line Type Thermal Mass Flowmeters (1/2" ... 3")



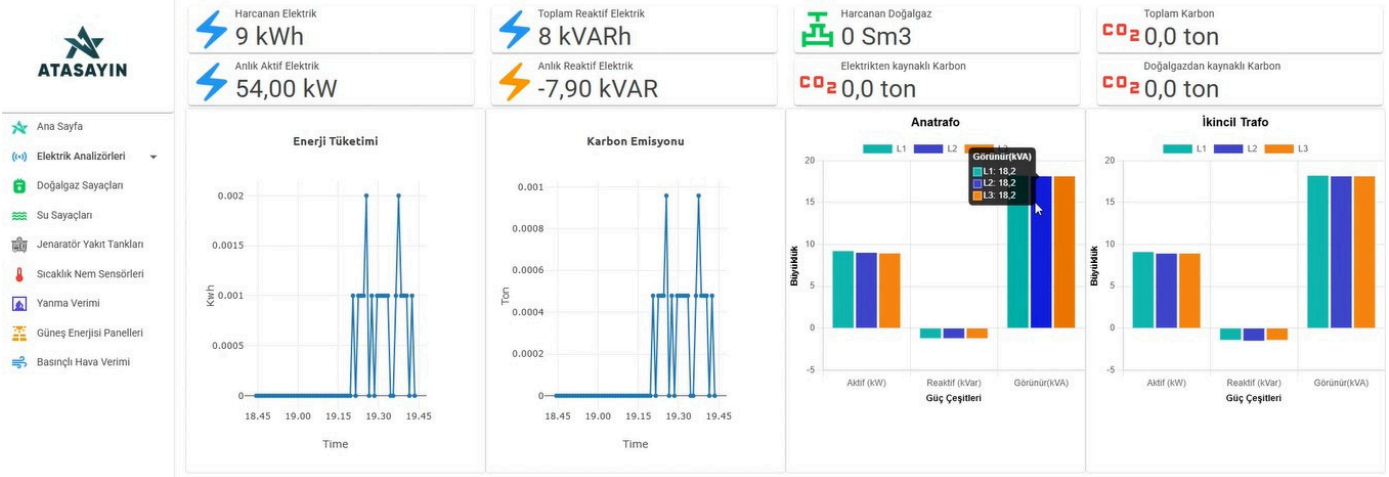
Ultrasonic Flowmeters

ENERGY MONITORING SYSTEMS



ATS Enerji Takip Sistemi

AYARLAR ÇIKIŞ



You can monitor electricity, natural gas, compressed air, and water consumption, as well as temperature and humidity, in real-time, and generate historical e-reports.

With the Energy and Carbon Emission Monitoring System, you can store and analyze data from every point you want to measure in your business. From a single screen, you can view energy consumption at all points, your current bills, estimated energy consumption, and estimated future bills. You can track your carbon emissions from energy consumption with this system. This offers the possibility of achieving up to 30% savings through efficiency projects based on your consumption levels. You can generate reports and retrieve information at any time. It reduces your operational costs by up to 40%.

SCREW JACKS

2C ENDÜSTRİ

From Circular Motion to Linear Power

For your lifting, alignment, and force application needs, 2C Industry screw jacks offer high performance with ENSUDE support.

By converting circular motion into linear motion, they enable the precise, safe, and synchronized handling of heavy loads.

Efficiency is increased with bevel gearbox options, and they can be easily integrated into systems.

Screw Jack systems, manufactured with 2C Industry quality, offer solutions suitable for all your motion transmission needs, including bevel gearbox options.



STATIC ELECTRICITY CONTROL



Static electricity can lead to safety risks, quality problems as well as production losses in many industrial manufacturing processes.

At ENSUDE, we are the sales representative for SET-ION, a globally preferred brand for specific this issue. SET-ION ionization systems are designed to effectively eliminate static electricity in sensitive production environments such as printing, plastics, packaging, textiles, automotive, and electronics.

The product range includes ionizer rods, air guns, blowing systems, fans, and integrated control units.

SET-ION solutions, distinguished by their high performance, low maintenance requirements, and safe operating principles, both improve quality and reduce downtime in production processes.



Anti-Static Carbon Brushes offer an economical and practical solution to your static electricity problems.

Anti-Static Carbon Brushes stand out with their robust construction, long lifespan, and maintenance-free operation. They feature contactless operation, easy installation, and an economical price.

They provide solutions to static electricity problems in the printing, packaging, textile, and wrapping industries.



With 25 years of experience in field, EnSuDe provides services in a wide range of areas, from fixture design to automated custom machine solutions, focusing on lean manufacturing principles, the FMEA approach, and optimized process flow. For companies seeking to increase efficiency and ensure sustainable quality, EnSuDe combines engineering expertise with practical solutions.

**We are offering
professional solutions
for your technical needs...**

EnSuDe
Engineering
Support &
Design

Folkart Towers, B Tower No:47/2804
Manas Boulevard, Adalet Neighborhood
Bayrakli – Izmir, Turkiye
<https://ensude.com>
+90 (552) 202 42 05
cem@ensude.com

